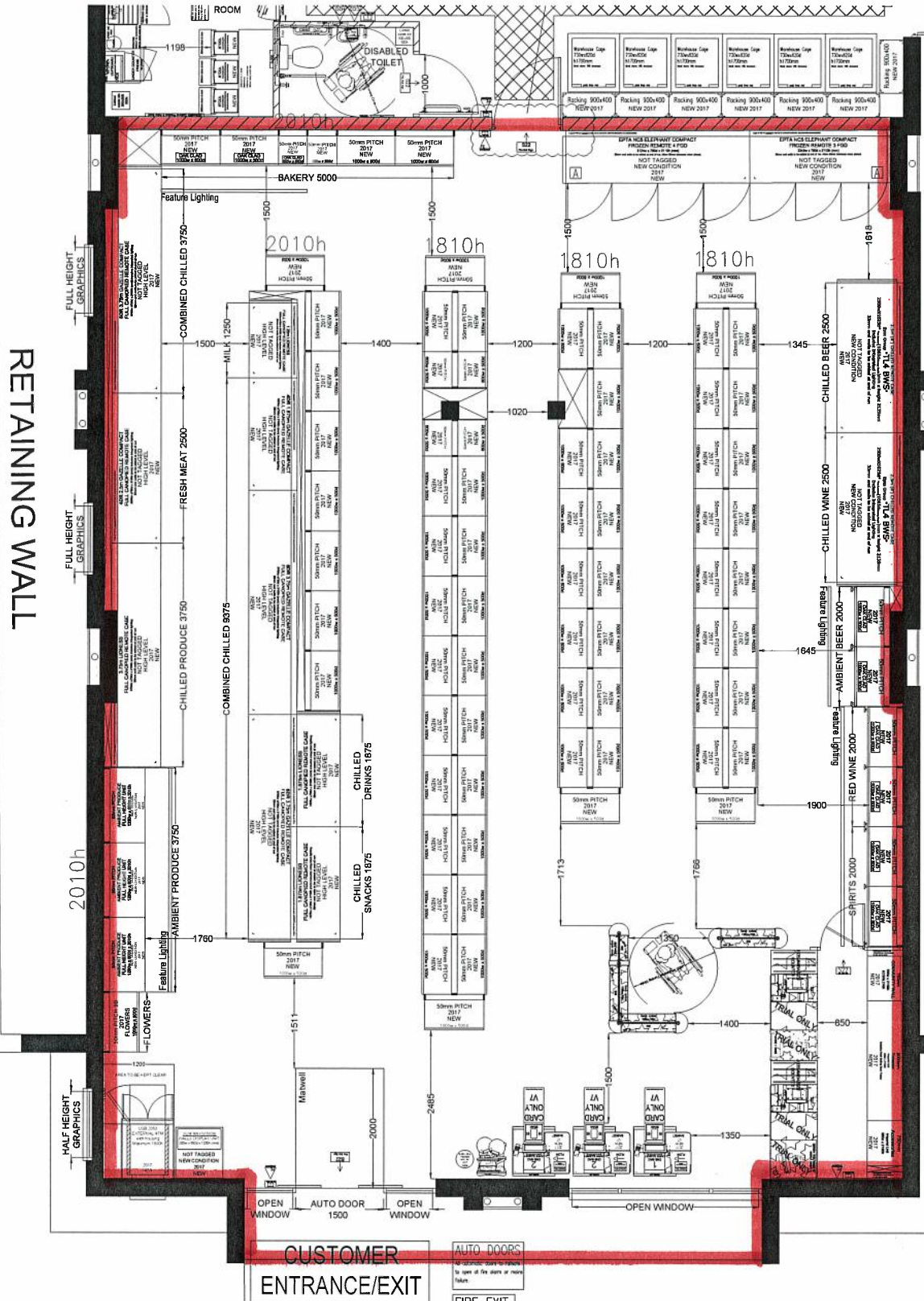


ORDNANCE SURVEY MAP (NTS)

PARKING



RETAINING WALL

CUSTOMER ENTRANCE/EXIT

FIRE SAFETY

FIRE SIGNAGE

Fire Exit - One-way

Fire Exit - Two-way

Fire Exit - Three-way

Fire Exit - Four-way

Fire Exit - Five-way

Fire Exit - Six-way

Fire Exit - Seven-way

Fire Exit - Eight-way

Fire Exit - Nine-way

Fire Exit - Ten-way

Fire Exit - Eleven-way

Fire Exit - Twelve-way

Fire Exit - Thirteen-way

Fire Exit - Fourteen-way

Fire Exit - Fifteen-way

Fire Exit - Sixteen-way

Fire Exit - Seventeen-way

Fire Exit - Eighteen-way

Fire Exit - Nineteen-way

Fire Exit - Twenty-way

Fire Exit - Twenty-one-way

Fire Exit - Twenty-two-way

Fire Exit - Twenty-three-way

Fire Exit - Twenty-four-way

Fire Exit - Twenty-five-way

Fire Exit - Twenty-six-way

Fire Exit - Twenty-seven-way

Fire Exit - Twenty-eight-way

Fire Exit - Twenty-nine-way

Fire Exit - Thirty-way

Fire Exit - Thirty-one-way

Fire Exit - Thirty-two-way

Fire Exit - Thirty-three-way

Fire Exit - Thirty-four-way

Fire Exit - Thirty-five-way

Fire Exit - Thirty-six-way

Fire Exit - Thirty-seven-way

Fire Exit - Thirty-eight-way

Fire Exit - Thirty-nine-way

Fire Exit - Forty-way

Fire Exit - Forty-one-way

Fire Exit - Forty-two-way

Fire Exit - Forty-three-way

Fire Exit - Forty-four-way

Fire Exit - Forty-five-way

Fire Exit - Forty-six-way

Fire Exit - Forty-seven-way

Fire Exit - Forty-eight-way

Fire Exit - Forty-nine-way

Fire Exit - Fifty-way

Fire Exit - Fifty-one-way

Fire Exit - Fifty-two-way

Fire Exit - Fifty-three-way

Fire Exit - Fifty-four-way

Fire Exit - Fifty-five-way

Fire Exit - Fifty-six-way

Fire Exit - Fifty-seven-way

Fire Exit - Fifty-eight-way

Fire Exit - Fifty-nine-way

Fire Exit - Sixty-way

Fire Exit - Sixty-one-way

Fire Exit - Sixty-two-way

Fire Exit - Sixty-three-way

Fire Exit - Sixty-four-way

Fire Exit - Sixty-five-way

Fire Exit - Sixty-six-way

Fire Exit - Sixty-seven-way

Fire Exit - Sixty-eight-way

Fire Exit - Sixty-nine-way

Fire Exit - Seventy-way

Fire Exit - Seventy-one-way

Fire Exit - Seventy-two-way

Fire Exit - Seventy-three-way

Fire Exit - Seventy-four-way

Fire Exit - Seventy-five-way

Fire Exit - Seventy-six-way

Fire Exit - Seventy-seven-way

Fire Exit - Seventy-eight-way

Fire Exit - Seventy-nine-way

Fire Exit - Eighty-way

Fire Exit - Eighty-one-way

Fire Exit - Eighty-two-way

Fire Exit - Eighty-three-way

Fire Exit - Eighty-four-way

Fire Exit - Eighty-five-way

Fire Exit - Eighty-six-way

Fire Exit - Eighty-seven-way

Fire Exit - Eighty-eight-way

Fire Exit - Eighty-nine-way

Fire Exit - Ninety-way

Fire Exit - Ninety-one-way

Fire Exit - Ninety-two-way

Fire Exit - Ninety-three-way

Fire Exit - Ninety-four-way

Fire Exit - Ninety-five-way

Fire Exit - Ninety-six-way

Fire Exit - Ninety-seven-way

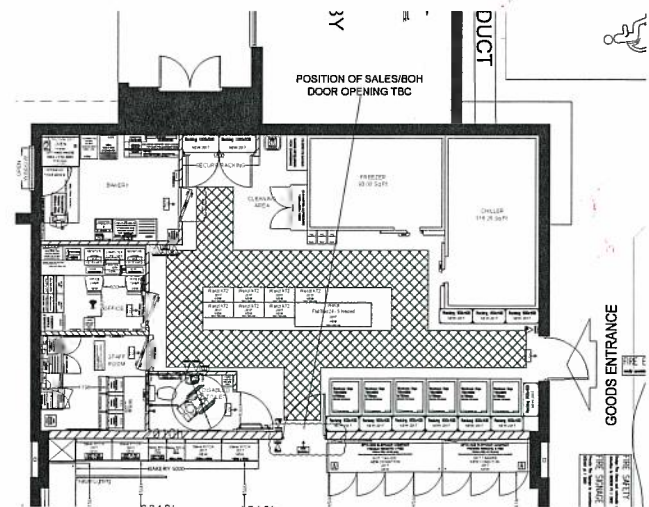
Fire Exit - Ninety-eight-way

Fire Exit - Ninety-nine-way

Fire Exit - One-hundred-way



ELEVATIONS 1:200



BACK OF HOUSE - 1:100

SHOP-FLOOR - 1:50

UNLOADING BAY

FTADesign HG Rigid Vehicle (1998)

SURVEY OVERLAID

Description of Amends
04.09.17/Hub No./PETERBOROUGH, HAMPTON PARK - P2F1M0
Change of Building Shell

Drawing No:	Scale:	Date:
NA	1:50/100	xx/xx/xxxx
NA	1:50/100	xx/xx/xxxx
TBC	1:50/100	xx/xx/xxxx

Drawing Information	Existing	Proposed
Gross Building Area (GBA)	Sq. Ft.	3735.62 Sq. Ft.
Gross Sales Area (GSA)	Sq. Ft.	2550.08 Sq. Ft.
Net Sales Area (NSA)	Sq. Ft.	2514.48 Sq. Ft.
Back of House Information		
Back Of House	Sq. Ft.	1164.78 Sq. Ft.
Back Up Chilled	Sq. Ft.	116.25 Sq. Ft.
Back Up Frozen	Sq. Ft.	93.00 Sq. Ft.
Drawn By:	Scale: 1:50/100	
Email:	Christopher.Wood@co-operative.coop	
Meetings		
Drawing Review	xx/xx/xxxx	
Sign Off Meeting	xx/xx/xxxx	
Drawing Status:	Feasibility CAD	

Standard Notes

Please refer to the Asset Planning Standard Notes for applicable information.

The drawings are to be checked on site and any discrepancy to be verified with the co-operative group on its agents before proceeding with the work. The prime purpose of this plan is for retail sales floorplan fitting. For further detail regarding this project refer to retail book or drawing portal.

Liensing Application Process Statement: "We will comply with our statutory requirements".

All work to be done in the ceiling unless otherwise stated.

Existing ceiling plans for walls are available on request.

Management of Asbestos

As part of our compliance with the Management of Asbestos Regulations, service providers must comply with the Co-operative Group's Management of Asbestos Controlling Materials, policy and processes. Service providers are to access the Co-operative Group's web-based asbestos register, issue 26/08/2016, prior to undertaking any works. Any difficulty in accessing asbestos information must be brought to our immediate attention and is not an excuse for working without this.

CDM Regulations 2015

The designers at the Co-operative wish to point out that the CDM Regulations 2015 apply to this work and the project may require notification to the HSE. Under the duty imposed by the CDM Regulations 2015 the designers have attempted to eliminate hazards so far as is reasonably practicable during design and where hazards could not be avoided the designers have reduced the risks associated. The remaining hazards and foreseeable risks that could not be designed out of the project have been identified as below.

FALLS from heights during installation of suspended ceilings, taking designers' level raised loading bays, as a result of split level floors and steps.

HAZARDOUS MATERIALS - Asbestos - to be removed as necessary by specialist, see the Co-operative Group's Management of Asbestos Controlling Materials policy and processes.

EQUIPMENT - ensure there are controls and training in place regarding the use and suitability of all equipment on site.

MANUAL HANDLING - lifting, moving, erecting, erecting boards etc.

PROTECTION - site operatives and Co-operative Group employees are to be protected at all times. Some of the work is to be undertaken out of hours. Work areas are not to be used by Co-operative Group staff during the alterations. The CDM coordinator is to be consulted with regard to the phasing of any work.

SERVICES - based services may exist under the floors and behind panels, with their exact position unknown. The contractor is to ascertain the location of all services prior to the commencement of works on site.

PETROL STATIONS - RISK OF EXPLOSION OF PETROL FLAMES - please refer to the Guidance for the Design, Construction, Modification and Maintenance of Petrol Filling Stations (The Blue Book) before undertaking any work.

ADDITIONAL DESIGNERS NOTES: any significant or unusual risks are highlighted in the drawing.

Exceptions

Any areas of the proposal that are not in-line with the current model should be detailed here along with the reason and thinking behind it. To also include any by-laws or covenants.

Store Demographic:
Staying: No

Checklist Added:
Asset Planner:
Date:

Risk Rating:
Planning:
Least:

Additional Equipment

VND

Magazines

Cards

Impulse Confect.

Impulse CSN

Pizza Step

Bakery

BWS Prom

Eden Bakery Stand

Grocery Prom

Electrical Shelving

Roll Cages BOH

Promo Plinths

BWS Top Box

Ground Floor, Eagle Way Hampton Vale Peterborough PE7 8GS

Store Phone No: Store Phone Number

Format: TBC

Hub Number: TBC

Brief Description of Works:
Proposed Fixture Layout

Latest system drawing

Job Originated By:

Acquisition Programme

Drawing No: PETERBOROUGH, HAMPTON PARK-P2F1M0

Macro Rev:

The Co-Op
1 Angel Square, Manchester, M89 9JG

This page is intentionally left blank